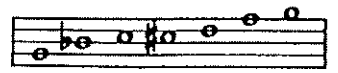


B_b

8. G BLUES



G BLUES SCALE

A MELODY

A Little of This?

♩ = 100

Musical notation for the melody section, consisting of three staves. Chords are indicated above the notes:

- Staff 1: G7, C7, G7, D-, G7
- Staff 2: C7, C7, G7, B \emptyset , E7+9
- Staff 3: A-, D7, B-, E7, A-, D7

There are triplets marked with a '3' under the notes in the third staff.

B Play 4 Choruses

Musical notation for the first exercise, consisting of three staves. Chords are indicated above the notes:

- Staff 1: G7, C7, G7, D-, G7
- Staff 2: C7, C7, G7, B \emptyset , E7+9
- Staff 3: A-, D7, B-, E7, A-, D7

C Play 4 Choruses

Musical notation for the second exercise, consisting of three staves. Chords are indicated above the notes:

- Staff 1: G7, C7, G7, D-, G7
- Staff 2: C7, C \sharp 07, G Δ , A-, B-, Bb-
- Staff 3: A-, D7, B-, E7, A-, D7